



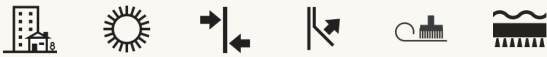
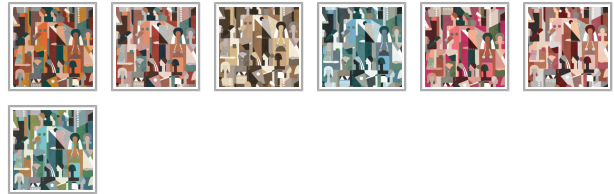
## COMMERCIAL VINYL

# Muse Vinyl Wallpaper

Muse is a striking tribute to the effortless elegance of global youth culture, captured through a series of geometric side profiles and faceless forms. Inspired by the sun-drenched coasts of Morocco and the South of France, this design radiates the relaxed confidence of a sophisticated, multicultural population at leisure.

The abstract silhouettes – defined by clean lines, bold hairbobs, and modern head coverings – evoke a sense of stylish anonymity. These faceless figures become muses of the moment: chic, diverse and unapologetically current. The composition plays with repetition and negative space, creating a visual rhythm that is both architectural and artistic.

Muse offers a fresh, fashion-forward point of view for hospitality, boutique retail and modern workspaces – anywhere that seeks to channel cultured cool with an edge of playfulness.



## MILTON & KING®

GENERAL ENQUIRIES, ORDER & PRODUCTS

[\(07\) 3162 5030](tel:0731625030)

Mon-Fri: 8am-5pm (AEST)

[support@miltonandking.com](mailto:support@miltonandking.com)

[www.miltonandking.com.au](http://www.miltonandking.com.au)

## BATCHING & DELIVERY

- **Note:** Samples of this vinyl are provided for review of the material, pattern scale and print technique – they are not intended to be used for colour matching purposes. There can be slight shifts in colour between runs, so your wallpaper may vary slightly from sample colouring.
- Please ensure that you order the correct amount as we do not guarantee that rolls printed in different batches will be an exact match.
- Industry leading production times on all orders.

# Commercial Vinyl Wallpaper

---

## MILTON & KING®

GENERAL ENQUIRIES, ORDER & PRODUCTS

[\(07\) 3162 5030](tel:(07)31625030)

Mon-Fri: 8am-5pm (AEST)

[support@miltonandking.com](mailto:support@miltonandking.com)

[www.miltonandking.com.au](http://www.miltonandking.com.au)

### ADDITIONAL INFO

Milton & King's **commercial-grade wallcoverings** are crafted to deliver exceptional durability, style, and high-performance results for a wide range of interior applications. Engineered to meet the demands of large-scale installations, they combine superior print quality with reliable on-site performance.

Our standard offering features a **Type II vinyl wallcovering with a non-woven backing**, designed for ease of installation and long-term durability. Osnaburg fabric backing is also available upon request to meet specific project requirements.

---

### CERTIFIED TO THE HIGHEST STANDARDS

Our commercial wallcoverings with non-woven backing are rigorously tested and exceed leading global standards for safety, durability, and performance.

- **Type II Commercial Grade** | Meets **GSA Federal Specification CCC-W-408D** for Type II wallcoverings
  - **Fire Rated** | Certified **Class A** under **ASTM E-84 Tunnel Test** (*Flame Spread Index: 5, Smoke Developed Index: 30*)
  - **European Fire Classification** | **EN 13501-1: B-s1,d0** certified
  - **Mold and Mildew Resistant** | Passes **ASTM G21** for anti-microbial performance
  - **Low VOC Emissions** | Meets **California CDPH Standard Method v1.2 / CA 01350** (*TVOC < 0.5 mg/m<sup>3</sup> in offices, classrooms, and homes*)
- 

### ENVIRONMENTALLY CONSCIOUS & LEED CONTRIBUTING

Our vinyl wallcoverings contribute to LEED v4 certification and align with key sustainability and environmental health criteria.

- **MR Credit 6** – Rapidly Renewable Materials
  - **IEQ Credit 4.1** – Low-Emitting Adhesives (when used with approved primers and adhesives)
  - **IEQ Credit 4.6** – Compliant ceiling and wall systems
  - **NSF/ANSI 342 Sustainability Certified**
  - **Prop 65 Compliant**, Phthalate-Free, and made without brominated flame retardants
- 

### BUILT FOR DEMANDING COMMERCIAL SPACES

Engineered for high-traffic and hygiene-sensitive environments, our vinyl wallcoverings deliver proven performance across a wide range of demanding commercial spaces.

- Healthcare and hospitals
- Hospitality and resorts
- Education facilities

- Retail and commercial corridors
- Residential interiors
- Airports, cruise ships, and transportation hubs

Milton & King's distinctive designs—celebrated for timeless style and high-definition detail—are now available in a commercial-grade format. Each wallcovering is crafted with care, engineered for longevity, and produced to meet the performance demands of today's most dynamic interiors.