



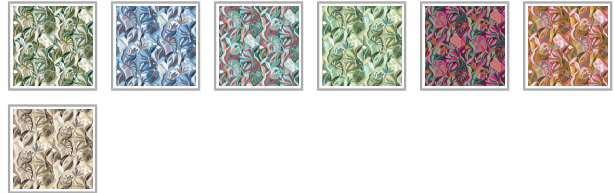
COMMERCIAL VINYL

Palmetto Vinyl Wallpaper

Palmetto captures the serene beauty of nature with a lush arrangement of fresh, fanned leaves that feel equally at home in a breezy tropical paradise or a tranquil forest floor. With graceful, wavy shapes and flowing lines, the design brings subtle movement and a soothing rhythm to any space.

Layered with depth and airy composition, the leafy forms invite a sense of calm and vitality, making Palmetto a versatile backdrop for both indoor sanctuaries and covered outdoor retreats. Ideal for hospitality, wellness, and leisure environments, this design breathes life into walls with its natural elegance and effortless charm.

Whether you're creating a spa-like oasis or a vibrant outdoor lounge, Palmetto offers a fresh, organic touch that bridges the line between the wild and the refined.



MILTON & KING®

GENERAL ENQUIRIES, ORDER & PRODUCTS

[\(07\) 3162 5030](tel:0731625030)

Mon-Fri: 8am-5pm (AEST)

support@miltonandking.com

www.miltonandking.com.au

BATCHING & DELIVERY

- **Note:** Samples of this vinyl are provided for review of the material, pattern scale and print technique - they are not intended to be used for colour matching purposes. There can be slight shifts in colour between runs, so your wallpaper may vary slightly from sample colouring.
- Please ensure that you order the correct amount as we do not guarantee that rolls printed in different batches will be an exact match.
- Industry leading production times on all orders.

Commercial Vinyl Wallpaper

MILTON & KING®

GENERAL ENQUIRIES, ORDER & PRODUCTS

[\(07\) 3162 5030](tel:(07)31625030)

Mon-Fri: 8am-5pm (AEST)

support@miltonandking.com

www.miltonandking.com.au

ADDITIONAL INFO

Milton & King's **commercial-grade wallcoverings** are crafted to deliver exceptional durability, style, and high-performance results for a wide range of interior applications. Engineered to meet the demands of large-scale installations, they combine superior print quality with reliable on-site performance.

Our standard offering features a **Type II vinyl wallcovering with a non-woven backing**, designed for ease of installation and long-term durability. Osnaburg fabric backing is also available upon request to meet specific project requirements.

CERTIFIED TO THE HIGHEST STANDARDS

Our commercial wallcoverings with non-woven backing are rigorously tested and exceed leading global standards for safety, durability, and performance.

- **Type II Commercial Grade** | Meets **GSA Federal Specification CCC-W-408D** for Type II wallcoverings
 - **Fire Rated** | Certified **Class A** under **ASTM E-84 Tunnel Test** (*Flame Spread Index: 5, Smoke Developed Index: 30*)
 - **European Fire Classification** | **EN 13501-1: B-s1,d0** certified
 - **Mold and Mildew Resistant** | Passes **ASTM G21** for anti-microbial performance
 - **Low VOC Emissions** | Meets **California CDPH Standard Method v1.2 / CA 01350** (*TVOC < 0.5 mg/m³ in offices, classrooms, and homes*)
-

ENVIRONMENTALLY CONSCIOUS & LEED CONTRIBUTING

Our vinyl wallcoverings contribute to LEED v4 certification and align with key sustainability and environmental health criteria.

- **MR Credit 6** – Rapidly Renewable Materials
 - **IEQ Credit 4.1** – Low-Emitting Adhesives (when used with approved primers and adhesives)
 - **IEQ Credit 4.6** – Compliant ceiling and wall systems
 - **NSF/ANSI 342 Sustainability Certified**
 - **Prop 65 Compliant**, Phthalate-Free, and made without brominated flame retardants
-

BUILT FOR DEMANDING COMMERCIAL SPACES

Engineered for high-traffic and hygiene-sensitive environments, our vinyl wallcoverings deliver proven performance across a wide range of demanding commercial spaces.

- Healthcare and hospitals
- Hospitality and resorts
- Education facilities

- Retail and commercial corridors
- Residential interiors
- Airports, cruise ships, and transportation hubs

Milton & King's distinctive designs—celebrated for timeless style and high-definition detail—are now available in a commercial-grade format. Each wallcovering is crafted with care, engineered for longevity, and produced to meet the performance demands of today's most dynamic interiors.